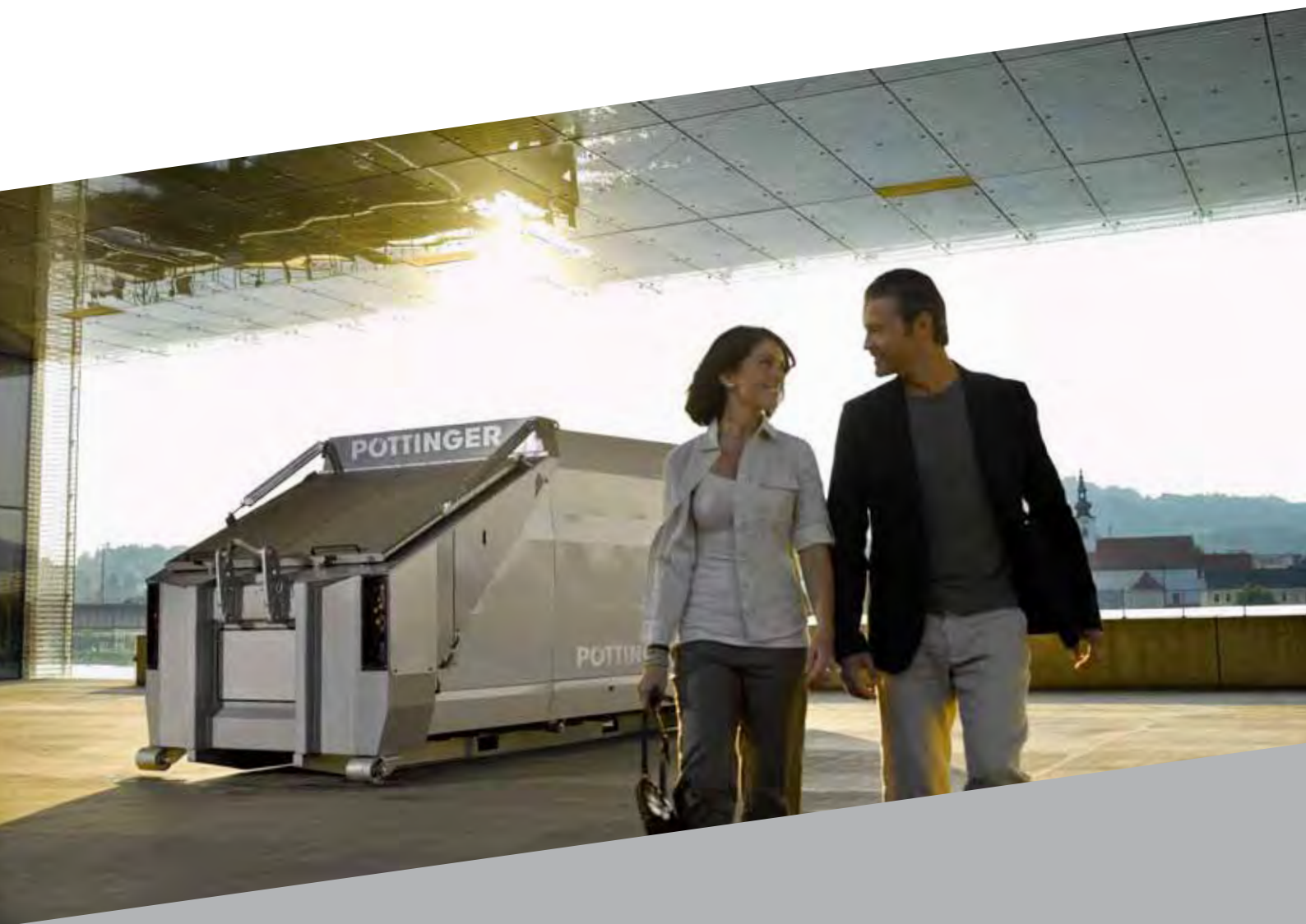




PÖTTINGER

Entsorgungstechnik



ONE
WORLD

EN



ONE WORLD



SUSTAINABILITY IS ALIVE



The responsible use of the earth's resources is one of the greatest challenges of our time. In a proverbially ever-shrinking world, it is important that what nature sends our way is carefully utilised and managed. Conservation is sustainability.

A component of the sustainable use of raw materials is the extensive collection and recycling of waste materials, recyclable waste and raw materials which are generated by production and consumption.

In the public sector, as well as in companies and products facilities, experts work out methods and solutions to promote this sustainability.

Of course, it is a matter of environmental conservation in the interests of society, but an important aspect is also cost effectiveness because waste materials are raw materials.

ONE WORLD – ONE MESSAGE



PÖTTINGER Entsorgungstechnik supports this notion. In search of joint fulfilment of individual tasks PÖTTINGER Entsorgungstechnik applies its core competencies to find with you the best sustainable, ecological and economical solution.

With systems, products and solutions which are tailored exactly to your individual requirements.

One World – One Target:

Together, when dealing with raw materials, we can give sustainability the significance that it deserves in our world.

QUALITY IS SUSTAINABLE

Good and durable solutions have tradition at Pöttinger – since generations. With the back up of our loyal customers we built up a family-run business that invents, develops, produces and supervises technology for people since 135 years.

Quality has a lasting effect – we know what we are talking about.

Klaus Pöttinger



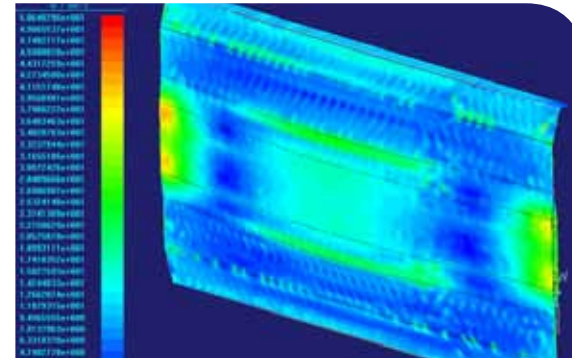
ONE WORLD ONE JOB

HOW WE WORK



The requirements of our customers are as diverse as our efforts towards sustainability in dealing with raw materials. Because only they have the knowledge about the future field of application of our products.

To fulfil or exceed the requirements of our customers is the target of our development department. With the most modern 3D CAD systems and our own FEM calculation department, we create solutions that not only meet the individual requirements of companies or institutions but above all, our primary goal is to never let sustainability out of our sight.



TACKLING TASKS

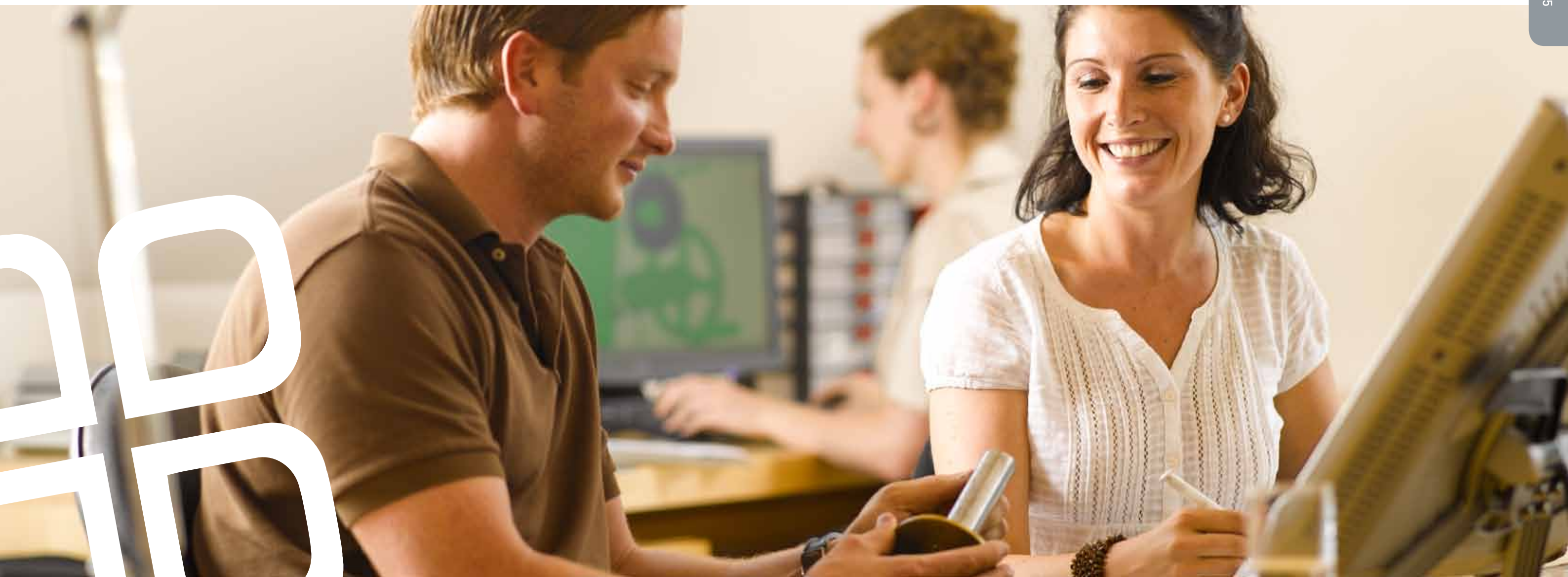


The team ensures that state-of-the-art technology is used through intensive coaching and training. The use of the most state-of-the-art materials and technologies is a prerequisite for the highest reliability of our products.

As quality should also look good, integrated design and innovation management work on making the most state-of-the-art technology visible, both internally and externally.

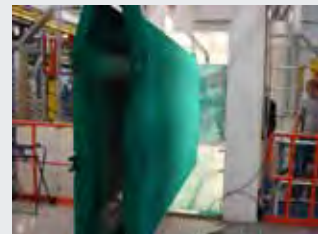
One World – One Job:

Our customers have a job to do. We will help you by recognising and realising your requirements with the aid of our products.





PÖTTINGER - 6 QUALITY MARKS



1 POWDER COATING

At PÖTTINGER, as many components as possible are sealed with cathoretic dip priming and powder coating to a high standard. Thus, our products receive the best possible corrosion protection and a consistently high quality look.

CUSTOMER BENEFITS

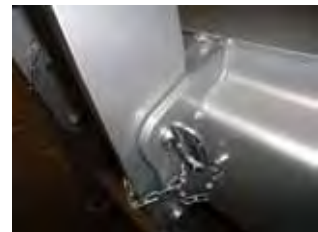
Protects the value of your investment for a longer and higher resale value.



2 OPTIMAL MATERIAL FLOW, GEOMETRY OF THE PRESS

By using the most modern calculation methods, we have succeeded in developing PÖTTINGER presses with optimised geometries.

CUSTOMER BENEFITS - This results in the optimum material flow which facilitates better filling of the containers (+20%) and correspondingly reduced transport costs.



3 STABLE EXECUTION + 200%

All components which are subject to certain demands in practice are often constructed twice as stable than would be required under normal operation. Our products are designed to cope with the harshest operating conditions.

CUSTOMER BENEFITS

High availability through minimum downtimes, low repair costs.



4 INNOVATIVE DESIGN

Quality endures - this also applies to our product design. Only if the values of our products are also experienced outwardly, our products receive the acceptance they deserve.

CUSTOMER BENEFITS - The benefit for our customers is that fine products give you more pleasure when handling them. In addition, the attractiveness of a PÖTTINGER brand product clearly delivers more resale value.



5 LOAD TESTS

Before a new mass-produced machine is introduced on the market by Pöttinger, it is put through its paces. The product service life is simulated for weeks in an internally developed test facility using the latest methods. Consequently, any possible weaknesses are identified and corrected at an early stage.

CUSTOMER BENEFITS - Our customers receive innovative, high-performance products with extremely high operational reliability and the best condition for maintenance-free and cost-effective operation.



6 TEXTILE COVERINGS

Many of our products are supplied with the option of being equipped with extensive promotional textiles. These high-end advertising spaces offer completely new opportunities for visual communication. The imagination almost knows no bounds.

CUSTOMER BENEFITS - Whether, you have your own brand message, adjusting to the wishes of the end customers or adjusting the outer shell to regional circumstances, the products simply receive more attention and acceptance. And in such a way, the experience shows that one obtains better prices.

ONE WORLD ONE LOOK

NOW IT'S YOUR TURN TO DESIGN

Conceal or accentuate? Camouflage or make the focal point? Now, you have the choice. Depending on the application and site of installation, your PÖTTINGER press container not only takes pride of place but also achieves the optical impact that you assign to it.



FREEDOM OF DESIGN

Gittex is the freely configurable promotional textile which encases our machines and gives a clean appearance - over the entire service life. A clean environment manifests itself not only in the operation of the machine but also in its appearance.

Now you just have to decide: Do you want the focus to be on sustainability of your waste management? A nature theme would be our suggestion here. Or is the focus on pride of ownership? Then the company logo or advertising message of the company is displayed. Or do you want a large container to simply disappear? That is also possible. A green hedge or other neutral motifs are possible.

However you decide: Gittex makes your press container a unique item. Regardless of whether graphic motifs or photos, each design requirement can be easily implemented. Because a press container does not have to be a blot on the landscape.

**One World - One Look.
The freedom of design.**



Bild: Banksy



PÖTTINGER - ONE WORLD

We have accepted the challenge together with our customers. With high-quality products and services we want to make a sustainable contribution to protecting our environment.

This will enable the generations to come to continue to enjoy a world that is worth living in.



PRODUCT SOLUTIONS



| | | YOUR REQUIREMENTS | HOW YOU BENEFIT | Page | | YOUR REQUIREMENTS | HOW YOU BENEFIT | Page | |
|---------------------------------------|--|--|---|---------|--------------------------|-------------------|--|---|---------|
| MULTIPRESS 1.4 / 1.9 / AK | | Reliable, long lasting technology and functional solutions | Optimum press technology with a modern design | 14 - 21 | MULTIPACK | | Vertical and horizontal baling presses for different materials | Highly versatile presses ranging from single chamber system to full automatic machines | 36 - 39 |
| MULTIPRESS XL Stationary Press | | The logical choice with large quantities of waste | Large filling opening combined with optimal transport logistics | 22 - 23 | MULTIBRIK | | High compaction and data protection | Use as document destroyer or for production waste in the coffee & tobacco industry | 40 - 41 |
| MULTIPRESS SC Screw Compactor | | Powerful technology for large volume materials | High throughput and efficient compaction with special feed options | 24 - 27 | MOBIGAS | | Energy from waste | Regional and modular Modular biogas systems for regional energy generation of organic waste | 42 - 43 |
| MULTIPRESS ECO | | Pollutor-pay waste disposal by weight | Innovative solutions for residential properties, housing associations and commercial properties | 28 - 33 | PÖTTINGER SERVICE | | Maintenance of machines | Maintenance and repair by experienced service technicians | 44 - 45 |
| CARDBOARD PRESS 500+ | | Effective cardboard disposal | Optimally suited for public recycling centres | 34 - 35 | | | | | |

MULTIPRESS 1.4 – 1.9

Optimum press technology with a modern design



WHEN FLEXIBILITY IS NEEDED



Investments need to be well-planned. Return on investment is the magic formula. MULTIPRESS containers make an important contribution to reducing costs thanks to their modular construction, allowing the container to be adapted easily to different locations. The Pöttinger range includes both mobile and stationary press systems. That is how we can provide custom-tailored waste disposal solutions for retailers, businesses, industrial companies, banks, municipalities and housing associations – year in, year out.

MULTIPRESS

Economic success depends on several factors

IMPROVED CAPACITY - UP TO 20% MORE FILL VOLUME



due to the newly developed press geometry. Tapered press bottom, curved press plate, high quality piston guiding and improved press geometry ensure an effective retention system. Up to 20% higher compaction!

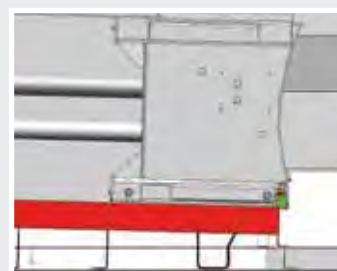
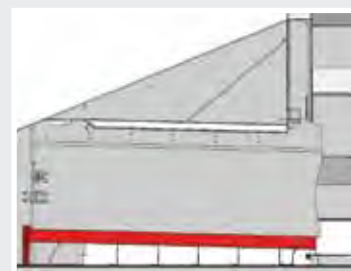
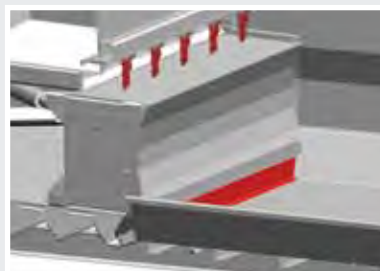


LARGE FILLING OPENING

The double build-up prevention by means of retaining tines and a 152 mm high trash holder in combination with the immersion depth of the compressing ram of 334 mm keeps the pressing area free and permanently available.

Type MP 1.4: 1050 x 1860 mm → 1,4 m³ / stroke.

Type MP 1.9: 1450 x 1860 mm → 1,9 m³ / stroke.



UNIVERSAL DEPLOYMENT AND VARIABLE EQUIPMENT THAT IS EASY TO RETROFIT

Regardless of whether ground, ramp or building loading – additional equipment can be bolted on for quick and easy adaptation to any disposal location.



TIPPING DEVICE

Preparation provided as standard - no welding needed for retrofitting.



OPERATION

Phase adapter and connection for remote control are supplied as standard.



SIDE-HUNG OR TOP-HUNG REAR DOOR

The back wall is easily converted from a side-hung door to a top-hung door. Standard 8-point locking system for leak tight seal. The hook on the back can be used for hoisting it on to the lorry.



SAFETY UNLOCKING DEVICE WITH DOOR CATCH SYSTEM

The operator is always outside of the danger area when opening the door. Through a special door catch system, people who are not in the field of vision remain protected.

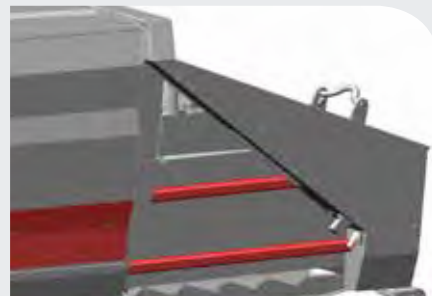


SAFETY IS TOP PRIORITY

OPTIONAL: BULKY WASTE MODEL - REINFORCED CONSTRUCTION FOR BULKY WASTE

The following components are reinforced on this model:

- Piston guide, piston and yoke
- Side walls of the container
- Floor cleaner on the piston head as standard



HYDRAULICS/ELECTRICS

Easy to access and clearly laid out. Accident prevention as no climbing aids are required. Easy to service thanks to ergonomic working position.

WORLD FIRST

POWDER COATING - IDENTICAL PAINT QUALITY AS THE CAR INDUSTRY



CED - Cathodic electrodeposition coating and powder topcoat

Pöttinger coating line technology incorporates cataphoretic dip priming and powder coating.

This is the most environmentally friendly painting method because the manufacture is carried out without solvents.

The individual steps of this procedure:

Automatic sandblasting, 9 zones dip treatment with zinc phosphate, 3 zones CED (cathodic electrodeposition coating – uniform primer thickness and best corrosion protection) using water based paint, baking process at 160°C and the powder coating with the final baking process at 180°C – 200°C.

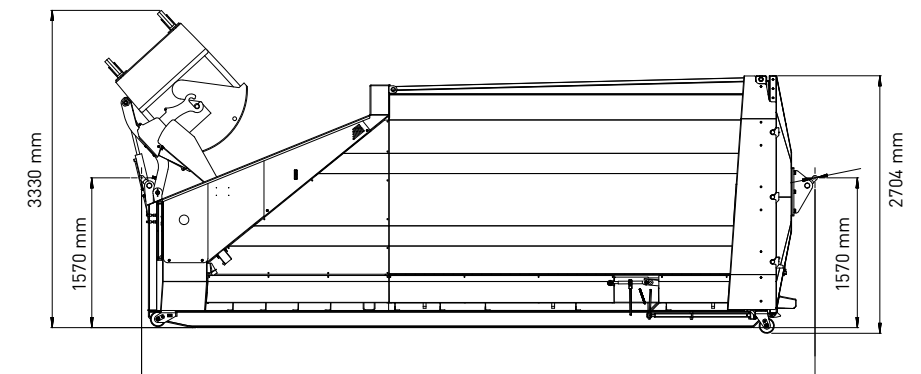
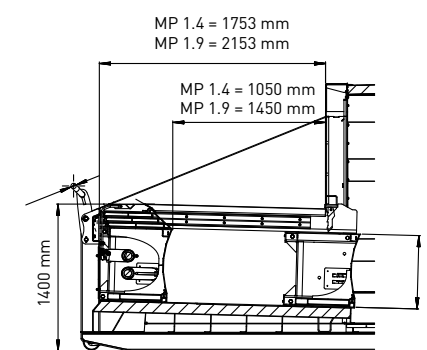
By this environmental friendly process all areas are completely coated and all parts show hard-wearing, elasticity and are UV resistant.

First press container manufacturer who offers powder coating:

- Durable
- Hard-wearing
- UV-resistant
- Uniform paint thickness
- Environmentally friendly / no solvents

| Technical data | 20 - 1.4 | 20 - 1.9 |
|-------------------------------|--------------------|--------------------|
| MULTIPRESS | | |
| Container volume | 20 m ³ | 20 m ³ |
| Length (without rear hook) | 6450 mm | 6850 mm |
| Length (incl. rear hook) | 6690 mm | 7090 mm |
| Width & height | 2460 x 2704 mm | 2460 x 2704 mm |
| Height of opening | 1400 mm | 1400 mm |
| Volumes per stroke | 1,4 m ³ | 1,9 m ³ |
| Height of the pressing piston | 700 mm | 700 mm |
| Press opening W x L | 1860 x 1050 mm | 1860 x 1450 mm |
| Filling opening W x L | 1860 x 1753 mm | 1860 x 2153 mm |
| Compression force | 340 kN | 340 kN |
| Pressing cycle | 40 sec. | 55 sec. |
| Motor | 5,5 kW | 5,5 kW |
| Slow fuse | 16 A | 16 A |
| Unladen weight | 5100 kg | 5360 kg |
| Cone | 3 sides of 100 mm | 3 sides of 100 mm |

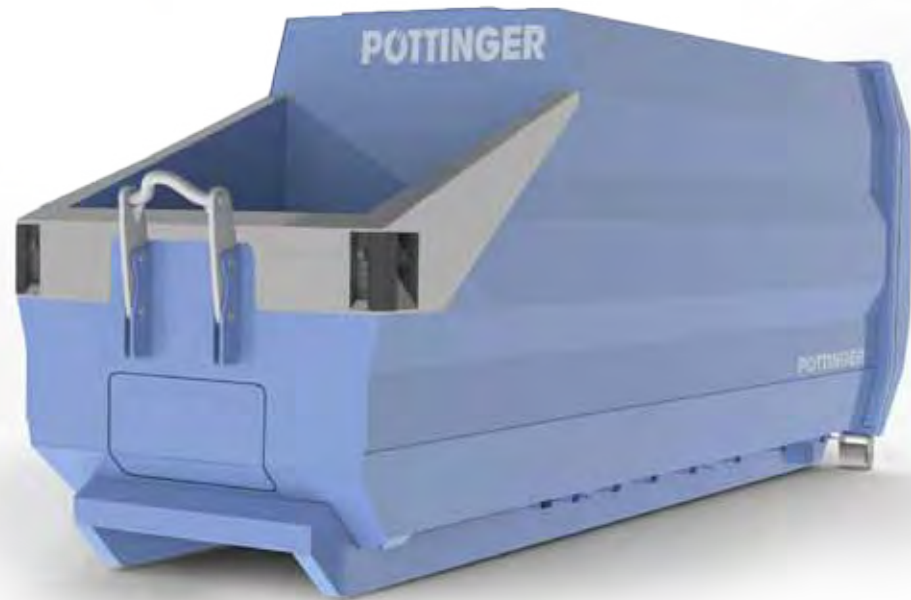
Container volumes 16, 18, 20, 22, 24 m³ - 2 m³ = L +/- 400 mm



MP 1.4 16 m³ = 5890 / 18 m³ = 6290 / 20 m³ = 6690 / 22 m³ = 7090 / 24 m³ = 7490
MP 1.9 16 m³ = 6290 / 18 m³ = 6690 / 20 m³ = 7090 / 22 m³ = 7490 / 24 m³ = 7890

MULTIPRESS AK

The compact solution



SPECIAL MODEL FOR USE WITH WET WASTE

Mixed waste and waste with a high rate of liquids can be ideally compacted. The sloping press floor and the 400mm step between press- and container-floor (trashholder) grant a clean technology area.



WHEN THERE IS ONLY LITTLE SPACE AVAILABLE OR FOR THE USE WITH SKIP VEHICLES



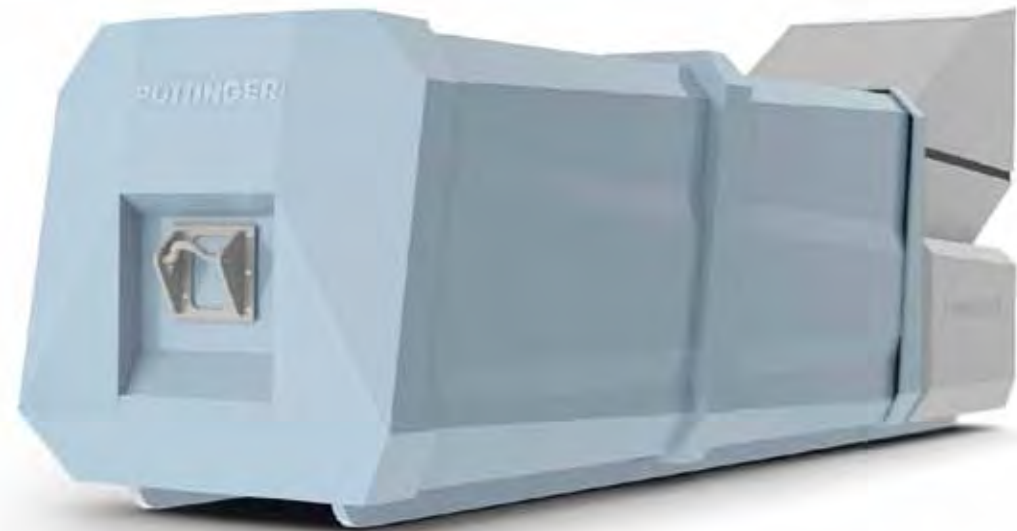
Due to the container volumes from 8 to 16 m³ and the width of 2 m, the MULTIPRESS AK suits to narrow surrounding areas. The press technology contains all advantages of the big brother and characterizes due to its efficiency, high compaction ratio and durability.



| Technical data | 10 AK | 16 AK |
|---|--------------------------------|--------------------------------|
| MULTIPRESS | | |
| Volume Container | 10 m ³ | 16 m ³ |
| Length skip Container (without hooks) | 4500 mm | - |
| Length roll-off Container (with front hook) | 4800 mm | 6340 mm |
| Width x Height (skip Container) | 1950 x 2400 mm | - |
| Width x Height (roll-off Container) | 1950 x 2440 mm | 1950 x 2440 mm |
| Height of opening | 1400 mm | 1400 mm |
| Volume / stroke | 0,9 m ³ | 0,9 m ³ |
| Height of press ram | 550 mm | 550 mm |
| Feed opening W x L | 1450 x 1000 mm | 1450 x 1000 mm |
| Filling opening W x L | 1450 x 1587 mm | 1450 x 1587 mm |
| Compression force | 250 kN | 250 kN |
| Pressing cycle | 24 sec. | 24 sec. |
| Motor | 5,5 kW | 5,5 kW |
| Slow fuse | 16 A | 16 A |
| Unladen weight | 3000 kg | 3750 kg |
| Cone | 80mm left + right, 30mm on top | 80mm left + right, 30mm on top |
| Volume Container 8, 10, 12, 14, 16 m ³ - 2 m ³ = L +/- 500 mm | | |
| Volume skip Container | 8, 10, 12, 14 m ³ | |
| Volume roll-off Container | 10, 12, 14, 16 m ³ | |

MULTIPRESS XL

Stationary Press: The new Generation



HUGE AMOUNTS AND VOLUMINOUS MATERIAL NEED EFFICIENT SOLUTIONS



For voluminous waste and recyclable fractions the stationary press MULTIPRESS XL is qualified like no other machine. 1,9m³ material per stroke gets pressed into a docking container. Bulky waste and large cardboard get compacted effortlessly. The stationary press can be filled continuously. It is also very easy to integrate it into feeding systems. As the docking container can be exchanged quickly a permanent availability of the machine is granted.



CORPORATE DESIGN

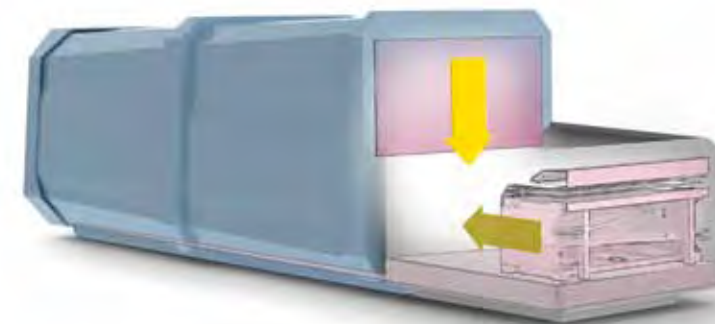
The new generation corresponds to the design of the new press container and can be ideally integrated into modern architecture.

Design your appearance – should the machine be integrated inconspicuously to the surrounding area or do you want to promote your company. Advertising textiles provide freedom of design.



VARIABLE EQUIPMENT

Different hopper-solutions for machine feeding from ground level, from a ramp or from the building via a chute, tilting devices, container-full announcement by SMS or Email, hydraulic shut-off slide. The base machine can be adapted to your requirements and very easily retrofit, too.



FOR A CLEAN TRANSPORT

The stationary press can be optionally equipped with a hydraulic shut-off slide. This grants a clean docking procedure and the compacted material stays in the container reliably.

| Technical data | |
|---|--------------------|
| MULTIPRESS Stationary Press | XL |
| Length Stationary Press | 2850 mm |
| Width x Height (without shut-off slide) | 2560 x 1550 mm |
| Height of opening | 1400 mm |
| Volume / stroke | 1,9 m ³ |
| Height of press ram | 700 mm |
| Feed opening W x L | 1860 x 1450 mm |
| Filling opening W x L | 1860 x 2153 mm |
| Compression force | 340 kN |
| Pressing cycle | 55 sec. |
| Motor | 5,5 kW |
| Slow fuse | 16 A |
| Weight (without hopper) | 3100 kg |
| Volume docking Container | 30 m ³ |
| Dimensions docking Container L x W x H | 6900 mm |
| Cone | 3-sides of 100 mm |
| Volume Container 28, 30, 32 m - 2 m ³ = L +/- 400 mm | |

SCREW COMPACTOR

Individual, maximum efficiency solutions



RISING LOGISTICS COSTS DEMAND EFFICIENT, COST-EFFECTIVE WASTE DISPOSAL SOLUTIONS.



We aim to support you in the best possible way.

The MULTIPRESS screw compactor from PÖTTINGER Entsorgungstechnik is a modular waste disposal system that can be adapted to different operating conditions and guarantees maximum efficiency. We look forward to helping you with planning, delivery, installation and servicing. We can design an individual solution in consultation with your specialists.

Reliable modern technology is a feature of our products!

Robust technology for different jobs

CARDBOARD AND PAPER

The screw compactor is the optimum technology for compacting bulky cardboard and large volumes. The large filling opening and efficient intake system guarantee fast, trouble-free processing. Optimum intake and compaction of whole or flattened cardboard.

EFFICIENT COMPACTION

The powerful screw shreds and compacts the load with maximum efficiency and speed. Coarse shredding gives significantly higher filling weights than hydraulic press systems. The continuous feed and large filling opening mean rapid processing.

- up to 200 m can be compacted in 60 minutes!
- Compaction factor up to 10:1
- approx. 8 tonnes cardboard in the 30 m³ Container



WOODEN PALLETS, FRUIT CRATES, DISPOSABLE CONTAINERS

Even whole euro pallets, bulky items or disposable containers are easily shredded, then highly compacted. The edges of the oversized screw have special crusher plates giving unbeatable performance. The modified hopper guarantees a perfect pallet intake.

| Materials | approx. t / 30m ³ Container | Kg / m ³ |
|----------------|--|-------------------------------|
| Cardboard | 8 t | 270 kg / m ³ |
| Wooden pallets | 6 - 10 t | 200 - 300 kg / m ³ |

Robust, reliable and long-lasting, ultra-modern technology:



INTAKE SYSTEM

The compactor has its own drive unit to provide maximum efficiency (even with flat stacked cardboard).



ROBUST DRIVE

The solid chain and chain tensioner give reliable, maintenance-free operation.



PROTECTED DRIVE UNIT WITH LABYRINTH SEAL



MAXIMUM USER SAFETY, TESTED ACCORDING TO SAFETY REGULATIONS SAFETY TECHNOLOGY



MODERN CONTROL SYSTEM WITH DISPLAY



OPTIONAL: WEAR PROTECTION PLATE FOR LONG ENDURANCE



IT'S YOUR CHOICE

You can choose between the mobile or static screw compactor depending on your space availability or logistics system. Mobile systems are used where flexibility is needed and the waste volume is not so high.

STATIC SYSTEMS

are particularly suitable for high volumes of waste. From the standard version to the complete package, we tailor the system to your on-site conditions.



WE PLAN AND INSTALL

the complete system including any handling equipment required. Individual feed options; the machine can be fed manually or by a lifting and tilting system, from ground level or from a ramp, or conveniently from the building via a chute. The screw compactor's small footprint means it can be easily tailored to the operating site.

| Technical data | SC 9 | SC 11 | SC 15 | SC 15 Wood | MSC 5 od. 7/20 |
|---|--------------------|--------------------|--------------------|--------------------|-------------------|
| MULTIPRESS screw compactor | | | | | |
| Length press station | 1940 mm | 1940 mm | 1940 mm | 1940 mm | 6450 mm |
| Width & Height (without hopper) | 2190 x 1300 mm | 2190 x 1300 mm | 2190 x 1300 mm | 2190 x 1300 mm | 2460 x 2704 mm |
| Height of opening | 1400 mm | 1400 mm | 1400 mm | 1400 mm | 1400 mm |
| Screw speed | 11,3 rpm. | 12,5 rpm. | 16 rpm. | 16 rpm. | 7 / 8,4 rpm. |
| Filling opening W x L | 1450 x 1450 mm | 1450 x 1450 mm | 1450 x 1450 mm | 1450 x 1450 mm | 1860 x 1753 mm |
| Motor | 9 kW | 11 kW | 15 kW | 15 kW | 5,5 / 7,5 kW |
| Slow fuse | 35 A | 50 A | 63 A | 63 A | 32 A / 35 A |
| Weight (without hopper) | 2250 kg | 2300 kg | 2350 kg | 2400 kg | 5800 kg |
| Volume docking Container | 30 m ³ | 30 m ³ | 30 m ³ | 30 m ³ | 20 m ³ |
| Dimensions docking Container L x W x H | 6880 x 2500 x 2672 | 6880 x 2500 x 2672 | 6880 x 2500 x 2672 | 6880 x 2500 x 2672 | |
| Conical | 3 sides of 100 mm | 3 sides of 100 mm | 3 sides of 100 mm | 3 sides of 100 mm | 3 sides of 100 mm |
| Container volumes 28, 30, 32 m ³ - 2 m ³ = L +/- 400 mm | | | | | |

MP ECO

The communal waste disposal is located in a dynamic environment. Steady change is the only constant.



With its modular designed products, PÖTTINGER is in the position to provide comprehensive complete solutions for housing associations and cities in the field of the household waste disposal according to the principles of cause and responsibility.

- ECO Underground
- ECO Tower
- ECO Internet
- ECO Industry
- ECO Lift small
- ECO Lift system
- ECO Communal

| Technical data | MULTIPRESS ECO |
|-------------------------------------|--|
| Height of opening | 1270 mm |
| Total volume of the weight system | 510 lt. |
| Filling volume of the weight system | 3 x 80 lt. bag - 300 lt. |
| Scale is EU calibrated | 0.1 g precisely / from 1-100 kg / class IIII |

For technical data on the press container see MULTIPRESS AK (Page 20-21)

ECO INTERNET - NOTHING WEIGHED, NOTHING GAINED

One technology - individual solutions

The cost of rubbish disposal keeps rising, no end seems to be in sight. The legislator and society promote sustainable waste management solutions with which one keeps costs under control and higher recycling quotas are achieved. The development and use of more modern and efficient procedures by PÖTTINGER make a significant contribution to this endeavour.

PÖTTINGER provides an intelligent waste disposal concept in ECO Internet which brings technical, ecological and economic benefits for the operator:

- Pollutor-pay allocation of the waste quantity via an EU-calibrated weighing system (+/- 0.1 kg)
- Reduced transport costs through compacted waste - approx 5:1
- (large) Reduction in residual waste
- Clean view of the place without offensive smells
- UP-to-date statistics and evaluation over the internet
- Full indication and error messages by SMS and/or email
- Individual calculation via invoice or pre-paid card
- Round-the-clock waste disposal: 24 hours a day / 7 days a week / 365 days of the year
- Traffic congestion - no waste collection vehicles
- Savings in waste fees of up to 50 percent.

Convenient, large weighing system with 510 lt. volume
EU-calibrated class IIII - automatic opening and closing, with safety bar.



Simple operation by means of a transponder card or key fob.
Non-contact identification - display with operator guidance

CONTEMPORARY DESIGN IN COMBINATION WITH PROFESSIONAL WASTE DISPOSAL

The visual appearance is becoming more and more important. The new MULTIPRESS ECO sets new standards with its design and functionality. Thanks to its individual design, the MULTIPRESS ECO can integrate perfectly into modern architecture.

INTERNET MANAGEMENT PROGRAM - WIP

All data is available to the user and operator by means of a login and password. Easy to manage: reporting, download of statistics and logs via the internet.

Demo version:
www.entsorgungstechnik.com/wip

Login: [entsorgung](#)
 Password: [entsorgung](#)

Detailed reports for invoicing give complete transparency and thus create motivation for waste separation.

| Last Name | Company | Location | Location | Year | Quota | Weight | Amount |
|-----------|---------|-----------------|----------|------------|-------|--------|--------|
| Arney T | Arney T | SAA Southampton | Report | 22.06.2010 | 22.45 | 37 | 14.80 |
| Arney T | Arney T | SAA Southampton | Report | 22.06.2010 | 22.45 | 63 | 21.00 |
| Arney T | Arney T | SAA Southampton | Report | 22.06.2010 | 22.21 | 28 | 10.50 |
| Arney T | Arney T | SAA Southampton | Report | 22.06.2010 | 22.27 | 27 | 10.30 |
| Arney T | Arney T | SAA Southampton | Report | 22.06.2010 | 22.23 | 22 | 8.40 |
| Arney T | Arney T | SAA Southampton | Report | 22.06.2010 | 22.19 | 8 | 3.00 |
| Arney T | Arney T | SAA Southampton | Report | 22.06.2010 | 22.01 | 9 | 3.30 |
| Arney T | Arney T | SAA Southampton | Report | 22.06.2010 | 22.03 | 46 | 13.60 |
| Arney T | Arney T | SAA Southampton | Report | 22.06.2010 | 22.00 | 11 | 4.00 |
| Arney T | Arney T | SAA Southampton | Report | 22.06.2010 | 21.27 | 30 | 10.40 |
| Arney T | Arney T | SAA Southampton | Report | 22.06.2010 | 21.23 | 30 | 10.40 |
| Arney T | Arney T | SAA Southampton | Report | 22.06.2010 | 21.24 | 66 | 23.80 |

Daily, weekly or monthly data transfer via GPRS on the internet.



ECO RELOAD

Convenient upload of new credit by means of upload machine.

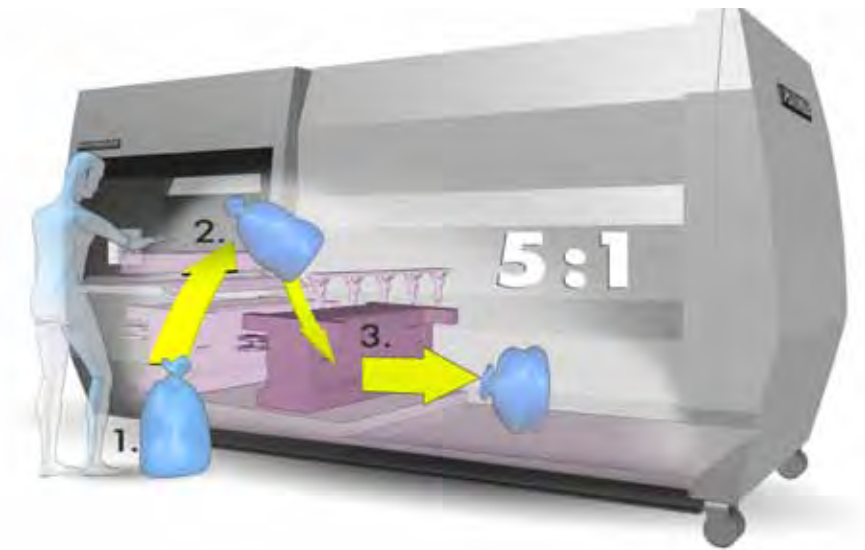


Programmer for transponder cards or key fobs.



WASTE COMPACTION

3500 kg of waste in a 10 m³ press container corresponds to approx. 200 dustbins of household waste.



ECO Communal

ECO UNDERGROUND

Wherever people live, waste is produced. Optimisation by means of electronics is gaining more and more significance and the proportion of electronic components will continue to grow. ECO underground is a semi-underground container with an integrated weighing system and a capacity of 5 m³.

The user is identified, the data saved accordingly and transferred to the internet management program.



ECO TOWER

More room for the essentials. With the ECO tower, big quantities of waste and recyclable waste can be collected. In addition, it creates space for a cleaner, attractive environment.



ECO Communal

ECO LIFT SMALL

The ECO lift small is a tried and tested lift system with which, depending on the model, several standard plastic containers can be lowered to the ground. In its lowered state, only the refuse chute of the platform is visible. The underground lift system is ideally suited for practical, aesthetic collection of waste and recycling materials.

Emptying takes place using the existing infrastructure with conventional vehicles.



ECO LIFT SYSTEM - UNDERGROUND LIFT SYSTEM FOR PRESS CONTAINERS

The lift is a very strong, hot-dip galvanised steel construction with a special one hydraulic cylinder lift system. The lift is integrated into a concrete element which is either pre-fabricated or provided by the customer. It consists of a lower platform for the press container and an upper cover platform which is accessible with light weight vehicles.

The waste is thrown in via refuse chute which is fixed onto the cover platform. The ECO lift system is suitable for press containers up to 20 m³.



ECO Industry



ECO INDUSTRY

It is the tailor-made solution for use in shopping centres, airports, stadiums, workshops etc. in order to divide the waste fees incurred fairly across individual companies

An additional advantage is its permanent availability. An enormous transport cost saving arises from the fact that standard press containers can be hooked onto the ECO STATIC weight chamber.

CARDBOARD PRESS 500+

Efficient collection of recycling material



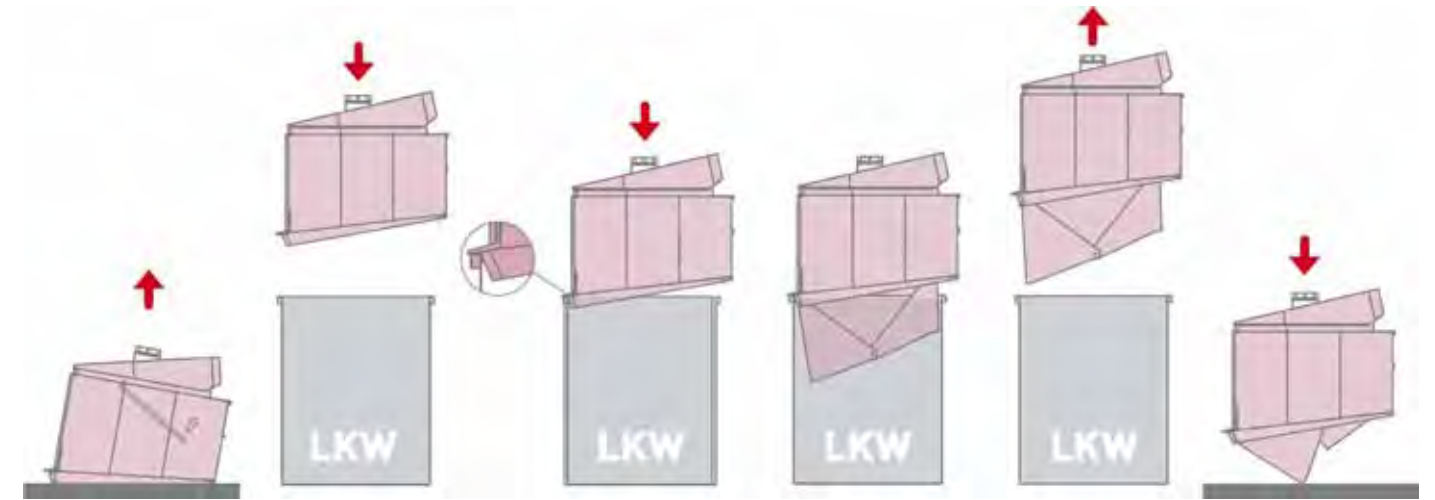
CARDBOARD BOXES ARE WELL-KNOWN TO BE BULKY AND UNWIELDY



Thereby collection is laborious and costly. The cardboard press 500+ achieves a compaction rate of at least 500% by means of a built-in press.

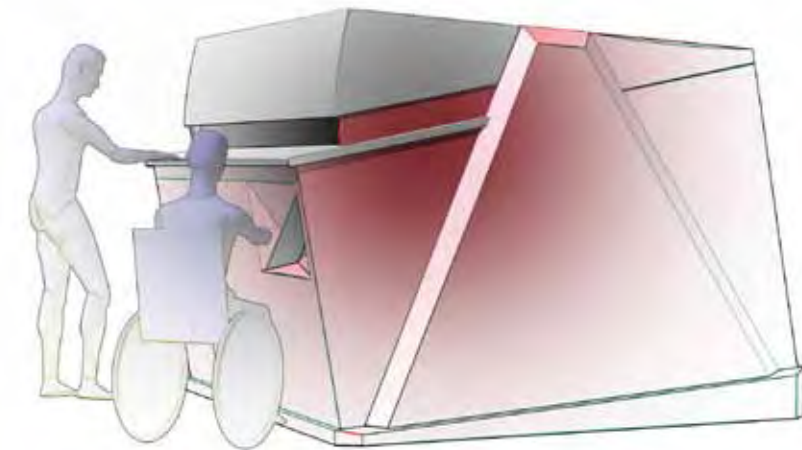
1000 kg cardboard boxes can be collected with only one emptying.

Thanks to its compact dimensions and the simple operation, the cardboard press 500+ is ideally suited for installation in public places. The level indicator via SMS enables optimum route planning, saving time and money.



EASY TO EMPTY

Emptying is easy and safe thanks to double doors. By means of special kinematics the doors close automatically when lowered. As the operator always remains outside the danger area, optimal safety is guaranteed.



FILLING OPENING FOR ALL OPERATORS

The wide filling opening and the ergonomically shaped feed table offer maximum ease of use. An additional feed-in recess even enables children and wheelchair users seamless and an easy operation.

| Technical data | Cardboard Press 500+ |
|-------------------------------|-----------------------|
| Dimension W x D x H | 2400 x 3100 x 2154 mm |
| Height of opening | 1400 mm |
| Dimensions filling slot W x H | 1970 x 120 mm |
| Engine power | 145 kN |
| Pressing cycle | 35 sec. |
| Motor | 3 kW |
| Slow fuse | 16 A |
| Unladen weight | 2000 kg |
| Container volume | 6 m ³ |

MULTIPACK

VERTICAL



SINGLE CHAMBER SYSTEM MULTIPACK 500 / 600

The small do-it-all for supermarkets, restaurants, hotels and workshops that have bulky refuse to dispose of and limited space available.



SINGLE CHAMBER SYSTEM 810 / 820 / 840 / 850

These power packs were especially developed to obtain higher bale weights with minimum space requirement and in doing so set new standards where economy is concerned. Pallet sized bales up to 500 kg for direct marketing can be made with a MULTIPACK 840 or 850.



MULTI CHAMBER SYSTEM MULTIPACK 700 / 710 / 720

Compacting and sorting in one with the multi-chamber presses from PÖTTINGER. Install your domestic waste material centre in the smallest space.



MULTIPACK 650

The waste compactor for standard containers from 660 to 1100 litres. Optimal container utilization through compression to approximately one third is guaranteed.



SACK PRESS MULTIPACK 660

The clean and hygienic solution for mixed refuse material. This sack press was designed for use especially in catering businesses and hospitals.



TIN CAN PRESS MULTIPACK 610 / 620

The can press for all metal and plastic packing up to 60 litres. The tremendous compaction of up to 20:1, the minimum space required as well as simple and clean operation make this MULTIPACK an indispensable component in painting businesses, auto workshops, restaurants, etc.



BARREL PRESS MULTIPACK 630 / 640

Steel drums of up to 200 litres are compacted effortlessly with a factor of 20:1.

Technical data on request

MULTIPACK HORIZONTAL



MULTIPACK 3000 A HORIZONTAL FULLY AUTOMATIC BALING CHANNEL PRESS

The fully automatic PÖTTINGER MULTIPACK baling channel press with output and bale weights of up to 600 kg are the optimal prerequisite for economic, future-oriented waste disposal.

Combined with an optimal feeding system (conveyor belt or air channel technique), valuable secondary raw material such as paper, cardboard, plastic film, hollow bodies and other packing materials are pressed into highly compressed and compact bales that can be easily stocked and transported.

MULTIPACK 3000 HA - SEMI AUTOMATIC BALING CHANNEL PRESSES



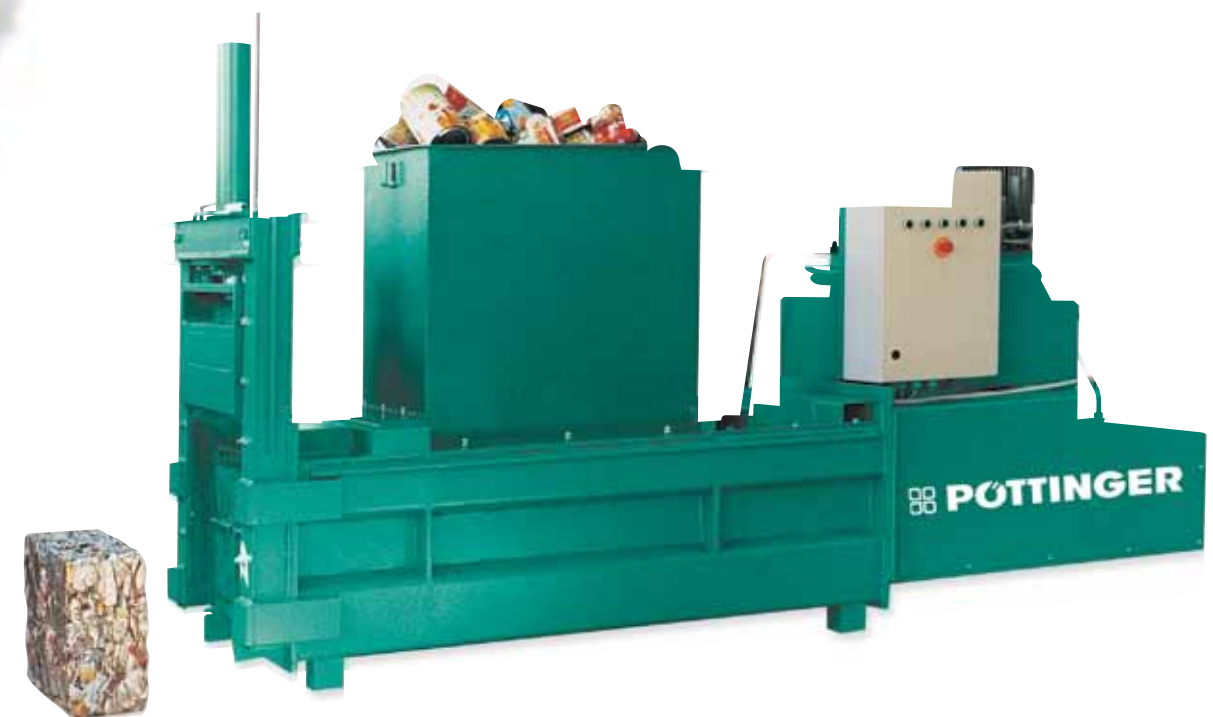
The biggest advantage of this baling channel press with a compression force of 12 to 36 tonnes is the possibility of filling it continually. A special construction of the press guiding plate with two cutting knives and a photo electrical sensor enable the machine to work without interruption.



MULTIPACK 2000 HORIZONTAL BALING PRESSES WITH COUNTER PLATE

Highly versatile horizontal baling presses with a compression force of 9 to 40 tonnes, which creates up to 500 kg heavy bales. Thanks to its power and high degree of automation very high performance is reached. The presses are used by industrial plants, large warehouses, large logistic centres as well as large furniture stores etc.

Optionally the press can be equipped with a lifting and tilting system which is ideal for waste collecting centres in cities.



MULTIPACK 4000 - TIN CAN PRESS

Can presses with electro-hydraulic mechanism and compression force of up to 70 tonnes, for compacting steel packaging, screw plugs, cans and tubes.

Technical data on request

MULTIBRIK

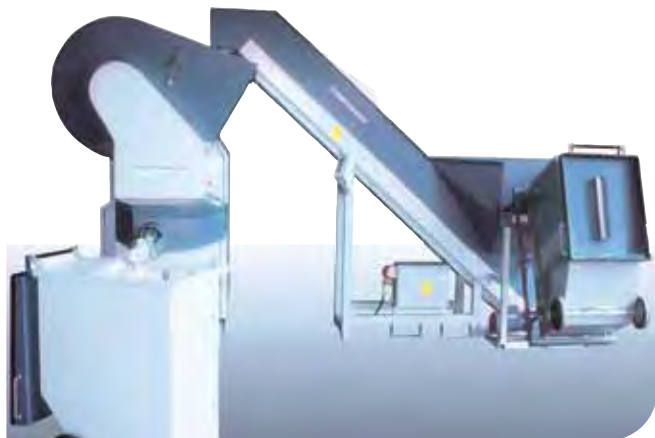
THE ALL-ROUND GENIUS FROM PÖTTINGER



MULTIBRIK BRIQUETTING PRESS

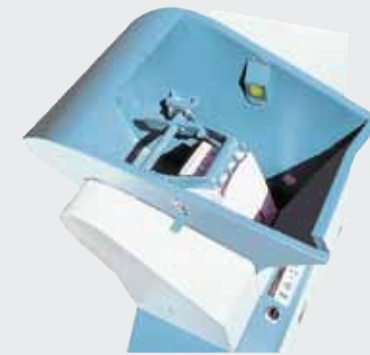


Through briquetting a wide range of materials, waste disposal logistics is optimised.
The possibility of connecting installations makes MULTIBRIK the ideal addition for full automatic processes.



DOCUMENT DESTRUCTION

- Optimal data protection (DIN protection class 4)
- Non-destroyed documents remain within the company
- Compaction rate up to 20:1
- Massive saving on storage and transport costs

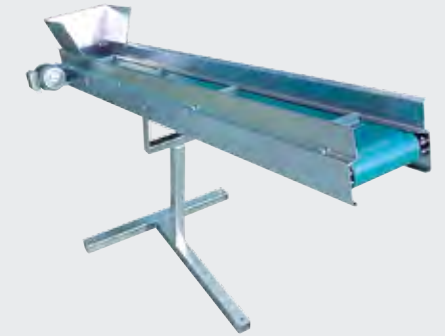
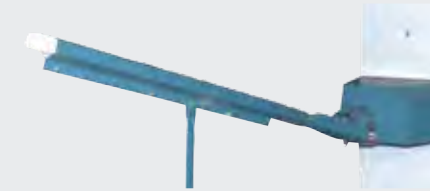


UNIVERSAL PACK ROTOR

A compressor mechanism for optimal material handling.
Arching is avoided.

VERSATILE CONVEYOR TECHNOLOGY

By means of a briquette sliding rail or a briquette conveyor, the briquettes are transported directly into a container.



TOBACCO INDUSTRY

- Paper and filter waste from the recovery process and tobacco dust are briquetted and thus makes disposal easier.
- Compaction rate up to 50:1.
- Water is added to bind the dust.

COFFEE INDUSTRY

- Membranes which accumulate during the roasting process are briquetted and thus aid problem-free waste disposal.
- Integration into existing extraction systems possible.
- Water is added to bind the dust.



| Technical data | MULTIBRIK 085 | MULTIBRIK 084 |
|------------------------------|---------------------------------|---------------------------------|
| Dimension W x D x H | 2090 x 1380 x 2190 mm | 2090 x 960 x 1450 mm |
| Hopper size feeder area | 760 x 800 mm | DM 250 or DM 600 mm |
| Hopper size output area | 350 x 480 mm | 420 x 450 mm |
| Motors | 7,5 kW / 10 kW + 4 kW + 0,55 kW | 7,5 kW / 10 kW + 4 kW + 0,55 kW |
| Briquette diameter | 60 mm | 60 mm |
| Output (depends on material) | approx. 100 - 200 kg/h | approx. 100 - 200 kg/h |
| Slow fuse | 32 A | 32 A |
| Weight | 1470 kg | 1470 kg |
| Water supply for briquetting | 3 bar minimum pressured | 3 bar minimum pressured |

MOBIGAS

MOBILE AND MODULAR BIOGAS SYSTEMS



THE REGIONAL CONCEPT FOR ENERGY GENERATION FROM ORGANIC WASTE



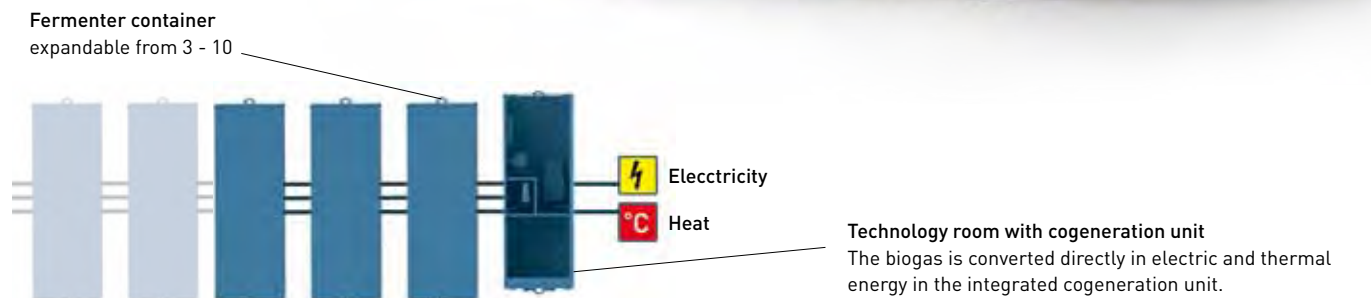
Organic waste is energy-rich and exists regionally in relatively large quantities. As a rule, waste disposal takes place using composting plants or it is disposed of with mixed household waste. However, it contains a lot of energy which is not used in conventional waste disposal methods.

The MobiGas concept is aimed at generating this energy and utilising it in the region. Through the integration into regional composting plants, the system provides the perfect complement and technical enhancement to the composting process.

THE PROCEDURE

Instead of the main composting stage, the organic waste is filled in the fermenter container to a volume of approx. 30 m³ and afterwards produces biogas in a three-stage process. The first phase is aerobic phase, whereby the material is ventilated in the fermenter. In the second phase, ventilation ceases and the anaerobic phase begins. A percolate is sprayed onto the material and the fermenter container gets heated via a floor heater. The generation of bio gas begins and lasts approx. 4 weeks. If the material is analysed, the fermenter container is ventilated again and thus the process is stopped.

The biogas is used directly on site by means of a cogeneration unit in electric and thermal energy.
The remaining material is subsequently processed and made into compost through secondary composting.



FLEXIBLE CAPACITY

Through its modular concept, the performance of the plant can be adjusted to requirements at any time. Depending on the required capacity, 3 to 10 fermenter containers can be used which generate an annual capacity of 500 to 2000 tonnes. The entire plant is controlled by the technology containers which contain the gas analysis, gas storage and gas utilisation.

Seasonal fluctuations in capacity, especially in summer and winter, can be covered by loan fermenters. Tourist areas with high winter capacity for example, can offset urban areas with higher summer capacity. The fermenter containers are simple and quick to transport by normal hook lift vehicles and can be attached to the plant.

ENVIRONMENTALLY-FRIENDLY PROCEDURE

Through the energy generation from organic waste, fossil fuels can be reduced. An important step towards energy self-sufficiency and CO₂ reduction! Local energy generation is a trend which will only continue to increase in the future.

| Technical data | MobiGas |
|---|----------------------------|
| Fermenter dimensions L x W x H | 7000 x 2500 x 2500 mm |
| Pick-up system | Hook lift |
| Fermenter volume | 27 m ³ |
| Process interval | 4-6 weeks |
| Biogas generation per 1 tonne substrate (depends on the material) | approx. 120 m ³ |
| Methane content of biogas | approx. 60 % |
| Energy generation per m methane (CH ₄) | approx. 10 kW |
| Cogeneration unit energy generation per m methane (CH ₄) electric | 3 kW |
| Cogeneration unit energy generation per m methane (CH ₄) thermal | 6 kW |
| Capacity per fermented | approx. 200 t / year |
| CO ₂ reduction per t substrate (reference value) | approx. 0,2 t |
| Space requirement for plant - 1 technology container and 5 fermented containers approx. | 10 x 30 m |



ONE WORLD – ONE SERVICE

WE STAND FOR COOPERATION



Quality stands for cost-effectiveness, reliability and durability. This doesn't just apply in production but also for service and customer service. The common goal is sustainability in waste management. Sustainability which we can only achieve through cooperation. Because a chain is only as strong as its weakest link, available goods need not constrain recyclable goods logistics. Only if the goods are available, you can fulfil your waste management tasks. That is the job of the Pöttinger service team.

PÖTTINGER service is full service: It begins with consulting and project management and moves onto review according to legal safety regulations, maintenance and troubleshooting service right up to repair. If needed, presses are available on loan. A spare parts service and general overhaul is likewise a matter of course. Our service team is very well trained and can be on site immediately. Our service and support packages are individually tailored to the requirements of our customers. Neither our customers nor the environment can afford hidden costs.

And incidentally, neither can we. Because the secret of our successful and long term cooperation with our customers is - service. Only if you are satisfied with us, are we satisfied with ourselves. That is the tradition in our company.

One World – One Team.

If manufacturer and user wish to pursue a common goal, service must be the focal point.



EFFICIENTY SERVICE QUALITY YOU CAN TRUST!



- 22 employees committed to providing service
- 12 service vehicles in your vicinity
- 15 service presses on loan for emergencies
- 2400 services scheduled every year
- 90% fault repair within 24 hours
- 85% spare parts delivery within 48 hours

ONE
WORLD





Technical modifications, mistakes or misprints reserved.

Pöttinger Entsorgungstechnik GmbH & Co KG

Industriestraße 30

4710 Grieskirchen / Austria

Phone +43-7248-600-2262

Fax +43-7248-600-2429

entsorgung@poettinger.at

www.poettinger-oneworld.at